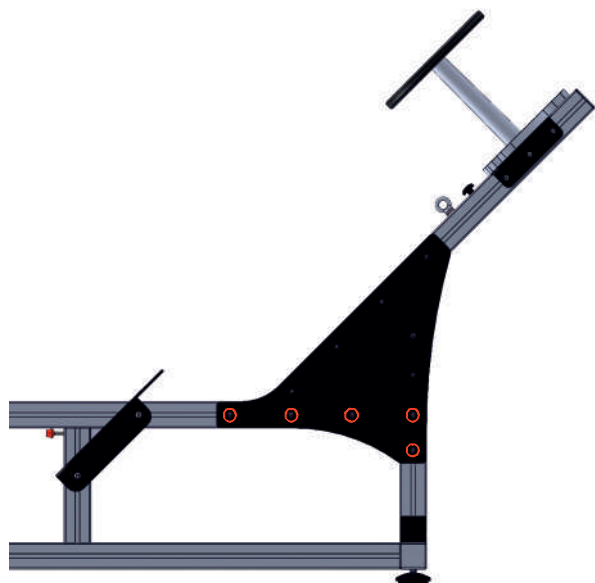


RSP ROW SPINNING. Components



1.



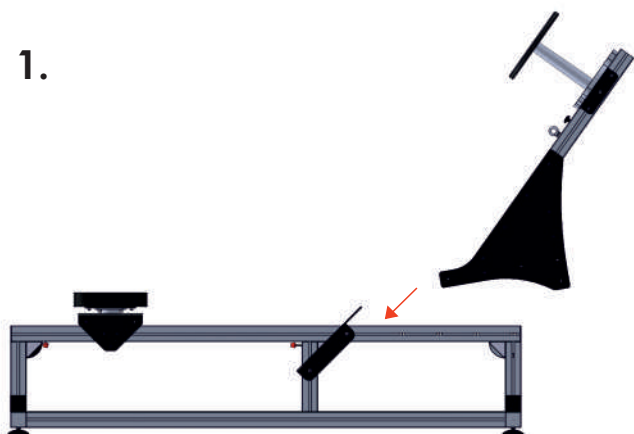
The fixing screws to be mounted will be: 5 units



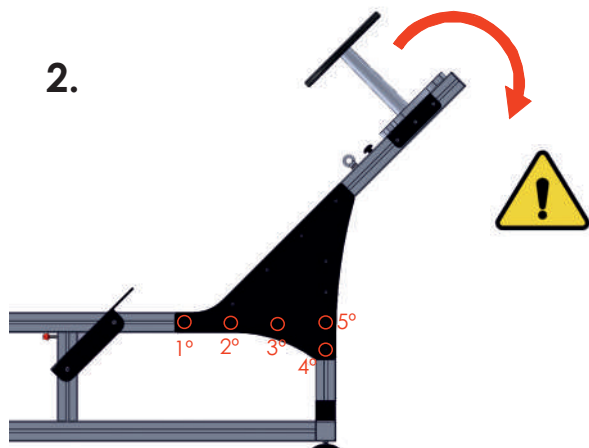
The tool required to carry out the assembly will only be a 4 mm Allen key.

RSP ROW SPINNING. Instalation

1.

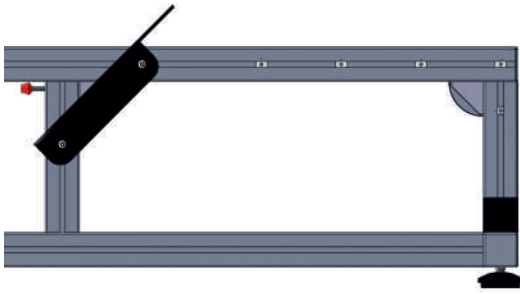


2.



!WARNING! If the screws are not in place and the upper part is only in position, there is a risk of the upper part tipping over. To minimize this risk, it is advisable to follow the assembly instructions.

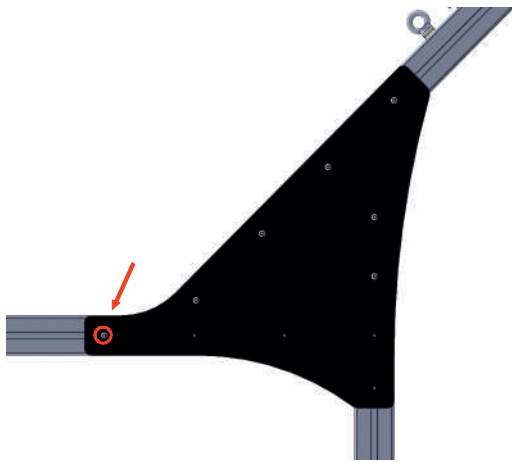
3.



The spring-loaded keyways

The spring-loaded keyways where the screws are to be threaded shall be positioned in their corresponding place. Before positioning the assembly on the structure, check that these have not moved and that they are correctly aligned with the marks made on the profile.

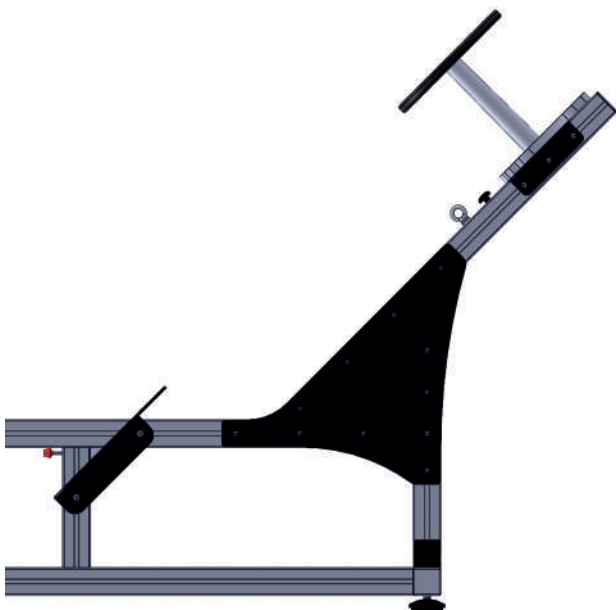
4.



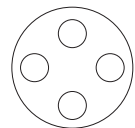
It is always recommended that the indicated screw be:

- The first to be tightened in the assembly process.
- The last to be released in the disassembly process.

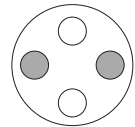
5.



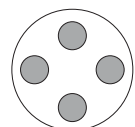
Placement masses:



without masses



2 masses



4 masses